

Luna Insight Overview

Insight consists of two modes: the Group Window and the Image Workspace. The Group Window is the starting point for finding and displaying images. The Image Workspace is the mode for working with images (e.g. zooming, panning, scrolling) and for creating and showing presentations. Data records for each image can be viewed in either the Group Window or the Image Workspace.

Group Window

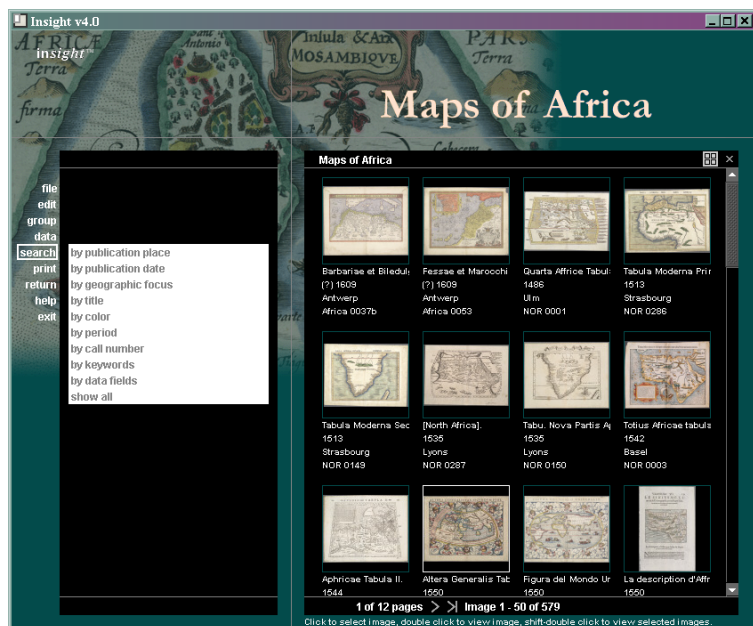
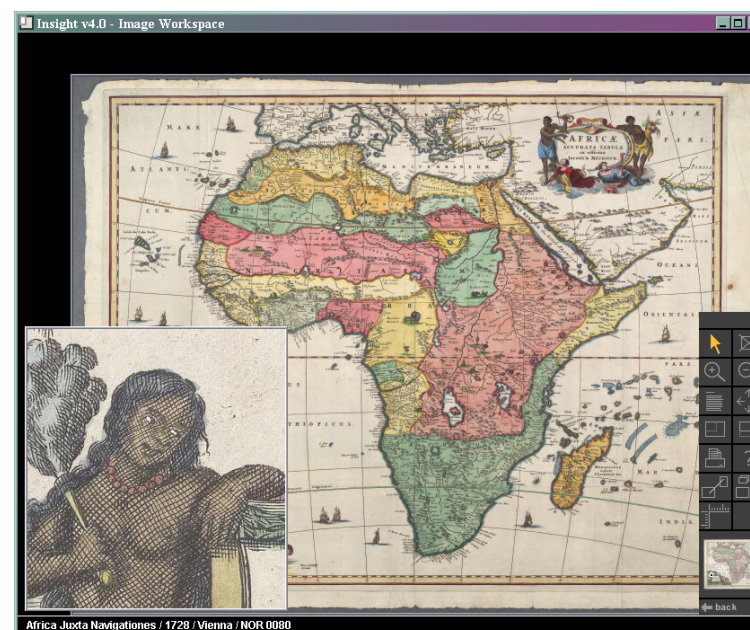


Image Workspace



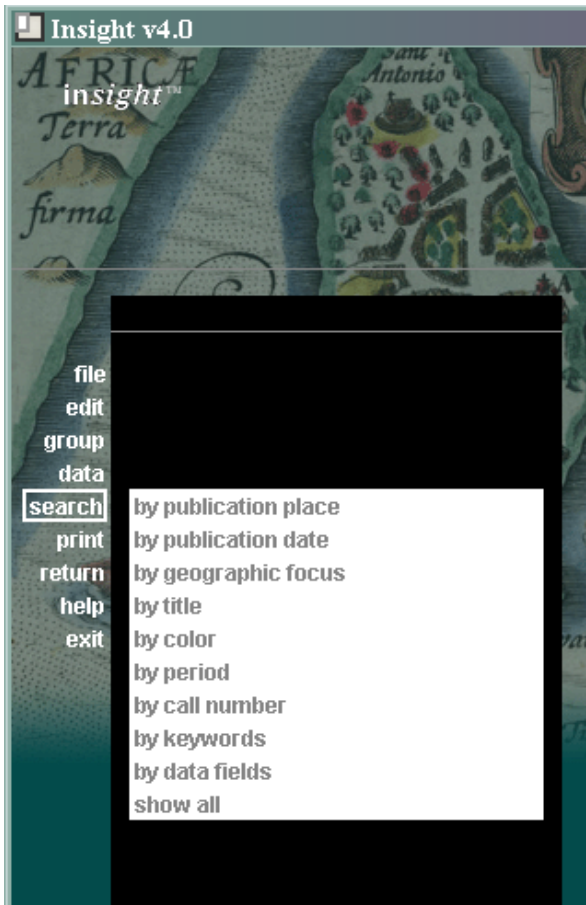
Switching between the Group Window and the Image Workspace

Double-click on a thumbnail in the Group Window to bring an image into the Image Workspace. Images can be manipulated in the Image Workspace.

Return to the Group Window by selecting the arrow  located at the bottom left of the Image Workspace toolbar.

Return to the Image Workspace from the Group Window by clicking "Return" on the Group Window menu.

See other side for *Group Window Menu* and *Image Workspace Toolbar* instructions.



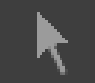









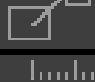
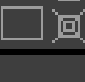
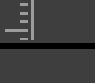

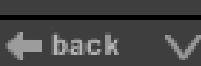
Group Window Menu

- file** Open another image collection; save or export images
- edit** Manipulate images within a group
- group** Re-sort images or change labels; select images
- data** Show detailed image information
- search** Search for specific images. Choose "by data fields" to perform complex searches.
- print** Print images, or export to HTML
- return** Return to Image Workspace and currently open images
- help** Access Insight help and tutorial
- exit** Exit the Insight application

How to access the Insight image collections from your computer

1. Download and install the Insight client program from:
<http://library.stanford.edu/depts/hasrg/hdis/insight.html>
2. Launch Insight from your computer's Start menu (Windows) or Apple menu or desktop (Macintosh)
3. Login as "public" (password "public") or "stanford" (password "stanford") as appropriate.

Image Workspace Toolbar

<p>Selection tool Moves and resizes active image</p>	 	<p>Remove Deletes selected image from Image Workspace</p>
<p>Zoom in Magnifies part of active image</p>	 	<p>Zoom out Reduces active image</p>
<p>Information Displays image data</p>	 	<p>Pan/Scroll Click and drag to pan or scroll</p>
<p>Maximize Enlarges image to the next higher resolution or maximum screen size</p>	 	<p>Minimize Reduces image to smallest size</p>
<p>Print Print selected image</p>	 	<p>Help Access Insight help and tutorial</p>
<p>Annotations Show/hide annotations for an image</p>	 	<p>Links Attach annotations to image; add links to other images or web sites</p>
<p>Measure/scale Use measurement and scaling tools</p>		
<p>Return Return to Group Window (thumbnails)</p>		<p>Preview Displays active image and viewing area. Move frame to change viewing area.</p>
		<p>Minimize toolbar Use this to minimize toolbar to bottom of screen</p>